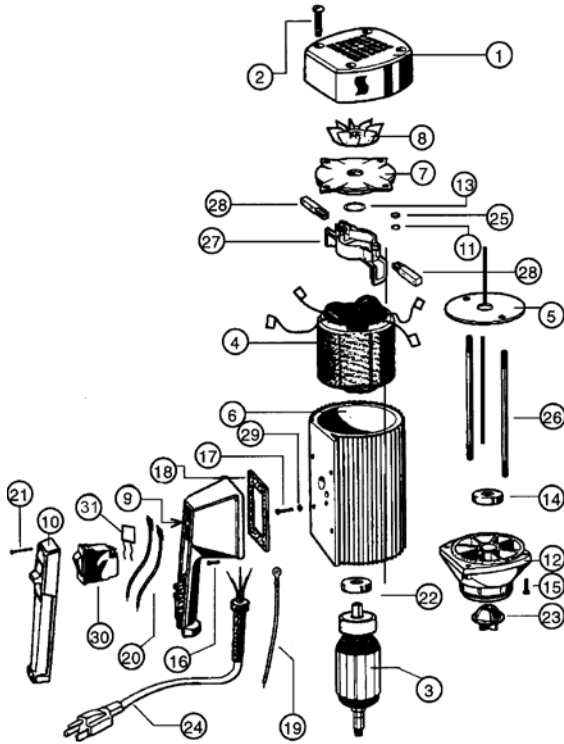


SP-ENC SERIES MOTOR SPARE PARTS



ITEM NUMBER	DESCRIPTION	PART NUMBER
1	Motor cover	3000
2	Screw	3130
3	Armature	110-120V 3502 220-240V 3701
4	Stator	110-120V 3503 220-240V 3702
5	Guide disc	3504
6	Motor housing	3510
7	Bearing cover	3511
8	Fan	3512
9*	Switch housing for variable speed, includes potentiometer	110-120V 8004 220-240V 8005
10*	Switch cover	8002
11*	Lock washer	8071
12*	Lower housing	8100
13*	Wave washer	8125
14*	Ball bearing	8126
15	Screw	8130
16A*	Screw for 110-120V	8131
16B*	Screw for 220-240V	36131LVR
17*	Ground screw	8162
18*	Gasket	8167
	Low voltage release (for 220-240V)	8167LVR
19	Earthing Lead	8183
20	Lead	8185
21*	Screw	8220
22	Ball bearing	8331
23*	Motor coupling	8333
24*	Power cord w/strain relief & plug	110-120V 8360 220-240V 8705
25*	Hexagon nut	8448
26	Rod connector	3703
27*	Brush holder	8508
28*	Carbon brush	110-120V 8509 220-240V 8703
29*	Star washer	8511
30*	Overload switch, 8.5 amp 110-120V 5 amp 220-240V low voltage release	8611 8704LVR
31	EMI Filter	8003

*Parts interchange with all Standard electric motors

! *SP-ENC open motor should not be used to pump flammables.*