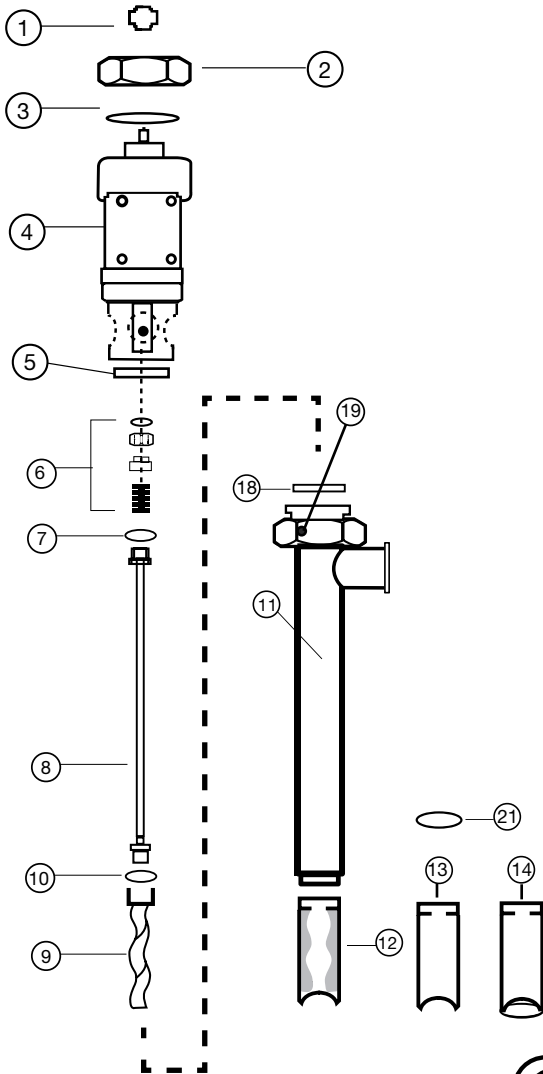


# 8300, 8300BL, 8301, 8301BL, 8313, 8313BL, 8314, 8314BL

## SPARE PARTS



ITEM NUMBER	DESCRIPTION	PART NUMBER
1	Pump Coupling	1004
2	Hex Nut	8842
3	Snap Ring	1508
4	Gear Reduction Unit	701
5	Mechanical Seal Bushing	702
6	Mechanical Seal, SIC	703
7	Gasket – PTFE	735
8	Drive Shaft, SS316	
	Pump Size – SP-1851-39	705
	Pump Size – SP-752-39	706
9	Rotor	
	Size 1851	710
	Size 752	709
10	Gasket – PTFE	731
11	Outer Tube Assembly	
	Pump Size – SP-1851-39	801
	Pump Size – SP-752-39	802
12	Stator – PTFE	
	Size 1851	824
	Size 752	823
13	Stator Tube	
	Size 1851	876
	Size 752	875
14	Stator Tube For Bag Liner	
	Size 1851	876BL
	Size 752	875BL
15	Tri-Clamp	833
16	Hose Barb 1.5 (38 mm)	835
17	O-Ring – BUNA	836
18	Gasket – PTFE	738
19	Set Screw	757
20	Batch Control Meter	800us51g47
21	SS Ring	0016
22	Check Valve	384510V

