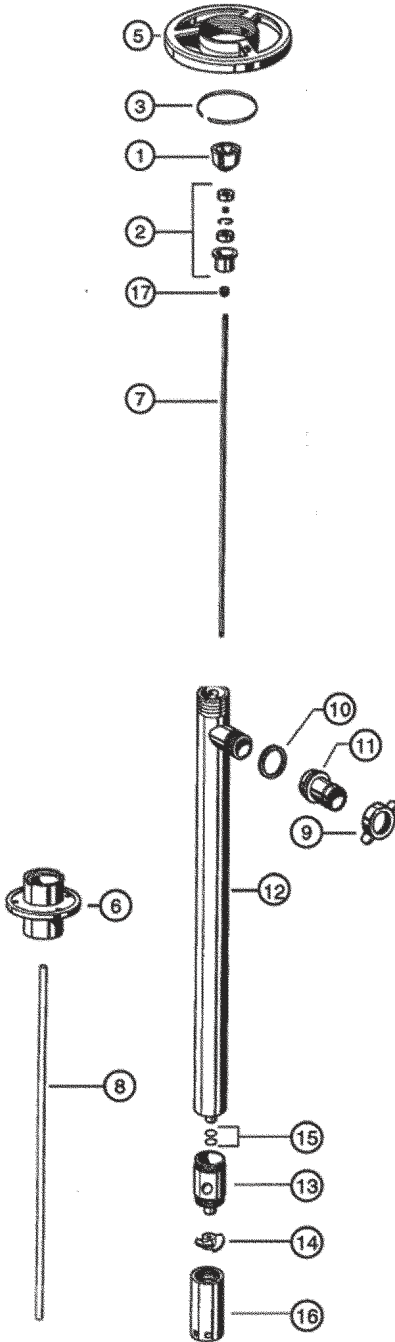


# 316 STAINLESS STEEL PUMP TUBE SERIES



ITEM NO.	DESCRIPTION	PART NUMBER
1*	Pump coupling	1004
2*	Bearing unit assembled — 2 each Viton shielded bearings, spacer, snap ring, bearing can	1038
3*	Snap ring	1508
5*	Hand wheel	1842
6	Connection flange	2000
7	Drive shaft 27" (700 mm)	2027
	39" (1000 mm)	2028
	47" (1200 mm)	2029
	60" (1400 mm)	2709
	72" (1800 mm)	2710
8	TFE guide sleeve 27" (700 mm)	2031
	39" (1000 mm) / 47" (1200 mm)	2032
	60" (1400 mm)	2711
	72" (1800 mm)	2712
9	Wing nut	2068
10	TFE seal	2195
11	Hose barb, 1" (25 mm)	2196
12	Inner/outer tube assembly	
	27" (700 mm)	2700
	39" (1000 mm)	2701
	47" (1200 mm)	2702
	60" (1400 mm)	2713
	72" (1800 mm)	2714
13	Pump housing with carbon bushing	2704
14	TFE impeller	2706
	High pressure impeller	4608 HH
15	"O"-ring, Viton, 2 per set	2707
16	Pump foot	2708
	High pressure pump foot	2708 HH
17	V-Seal - TFE	4000

\*Parts interchange with all pump tubes.

**⚠ Read and understand operating and safety instructions before operating any Standard Pump.**