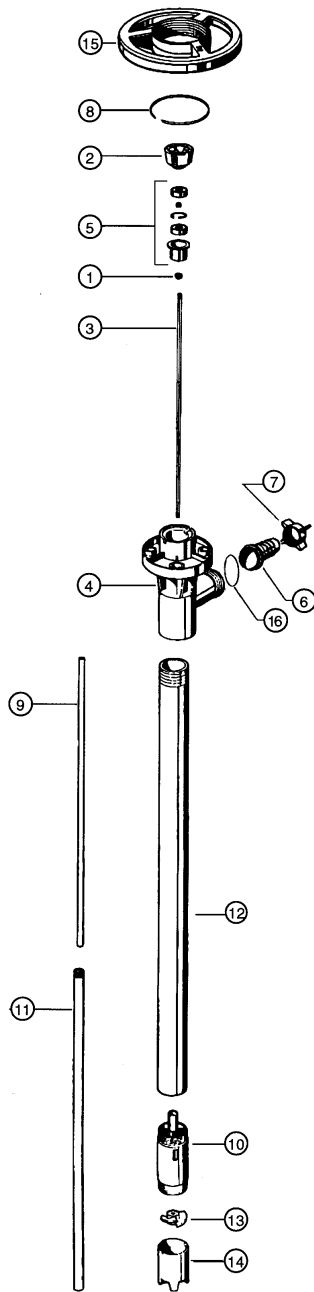


HIGH TEMPERATURE PUMP SERIES



ITEM NUMBER	DESCRIPTION	PART NUMBER
1	V-seal - TFE	4000
2	Pump coupling	1004
3	Drive shaft	27" (700 mm) 1543
		39" (1000 mm) 1544
		47" (1200 mm) 1545
		50" (1270mm) 1549
		60" (1400 mm) 1546
		72" (1800 mm) 1547
4	Discharge housing	6028
5	Bearing unit assembled - 2 each	1038
	Viton shielded bearings, spacer, snap ring, bearing can	
6	Hose barb,	3/4" (22 mm) 6051
		1" (25 mm) 6082
7	Wing nut	6106
8	Snap ring	1508
9	Guide sleeve - TFE	
		27" (700 mm) 1516
		39" (1000 mm), 47" (1200 mm), 50" (1260 mm) 1514
		60" (1500 mm), 72" (1800 mm) 1661
10	Pump housing includes carbon bushing	6524
11	Inner tube,	27" (700 mm) 6600
		39" (1000 mm) 6601
		47" (1200 mm) 6602
		50" (1270mm) 6623
		60" (1400 mm) 6615
		72" (1800 mm) 6616
12	Outer tube,	27" (700 mm) 6604
		39" (1000 mm) 6603
		47" (1200 mm) 6605
		50" (1270mm) 6624
		60" (1400 mm) 6617
		72" (1800 mm) 6618
13	Impeller	6608
	High pressure impeller	4608 HH
14	Pump foot	6609
	High pressure pump foot	6609 HH
15	Hand wheel	1842
16	O-Ring	6695