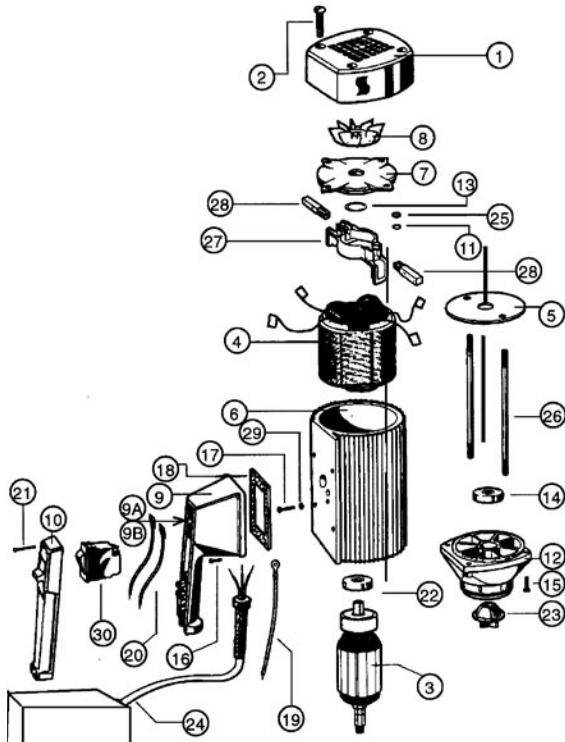


SP-ENC SERIES



ITEM NO.	DESCRIPTION	PART NUMBER
1	Motor cover	3000
2	Screw	3130
3	Armature	115V 3502 220V 3701
4	Stator	115V 3503 220V 3702
5	Guide disc	3504
6	Motor housing	3510
7	Bearing cover	3511
8	Fan	3512
9*	Switch housing	8001
9A*	Switch housing for variable speed, includes potentiometer	115V 8004 220V 8005
9B*	Switch housing for batch control, includes potentiometer and BCS port connection	115V 8006 220V 8007
10*	Switch cover	8002
11*	Lock washer	8071
12*	Lower housing	8100
13*	Wave washer	8125
14*	Ball bearing	8126
15	Screw	8130
16A*	Screw for 115V	8131
16B*	Screw for 220V	36131LVR
17*	Ground screw	8162
18*	Gasket	8167
	Low voltage release (for 220V)	8167LVR
19	Earthing lead	8183
20	Lead	8185
21*	Screw	8220
22	Ball bearing	8331
23*	Motor coupling	8333
24*	Power cord w/strain relief & plug	115V 8360 220V 8705
25*	Hexagon nut	8448
26	Rod connector	3703
27*	Brush holder	8508
28*	Carbon brush	115V 8509 220V 8703
29*	Star washer	8511
30*	Overload switch, 8.5 amp 115V 5 amp 220V low voltage release	8611 8704LVR

*Parts interchange with all Standard electric motors

⚠ SP-ENC open motor should not be used to pump flammables.