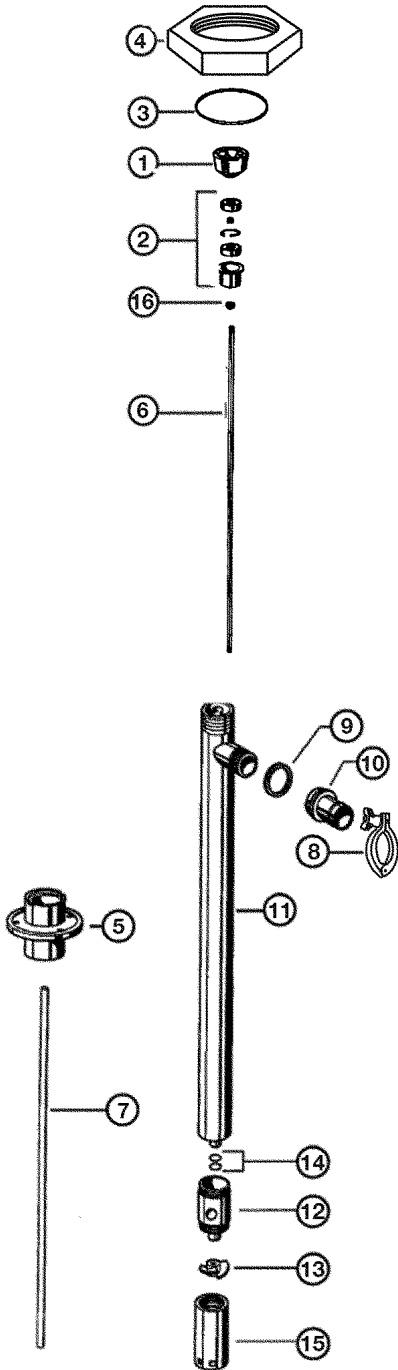


SP-8100 ULTRA FLOW SERIES PARTS



ITEM NUMBER	DESCRIPTION	PART NUMBER
1	Pump coupling	1004
2	Bearing unit assembled — 2 each Viton shielded bearings, spacer, snap ring, bearing can	1038
3	Snap ring	8208
4	Hex nut	8842
5	Connection Flange	8102
6	Drive shaft 39" (1000 mm) 47" (1200 mm)	2028 2029
7	TFE guide sleeve 39" (1000 mm) / 47" (1200 mm)	8106
8	Tri-clamp	833
9	"O"-ring, buna	836
10	Hose barb 1.25" (32 mm) 1.50" (38 mm)	834 835
11	Inner/outer tube assembly 39" (1000 mm) 47" (1200 mm)	8104 8105
12	Pump housing with Teflon bushing	8107
13	TFE impeller	2706
14	O- ring, buna, 2 per set	8103
15	Pump foot	8108
16	V-Seal - TFE	4000

! When pumping flammable or combustible liquids, this pump must be used in conjunction with an explosion proof motor.