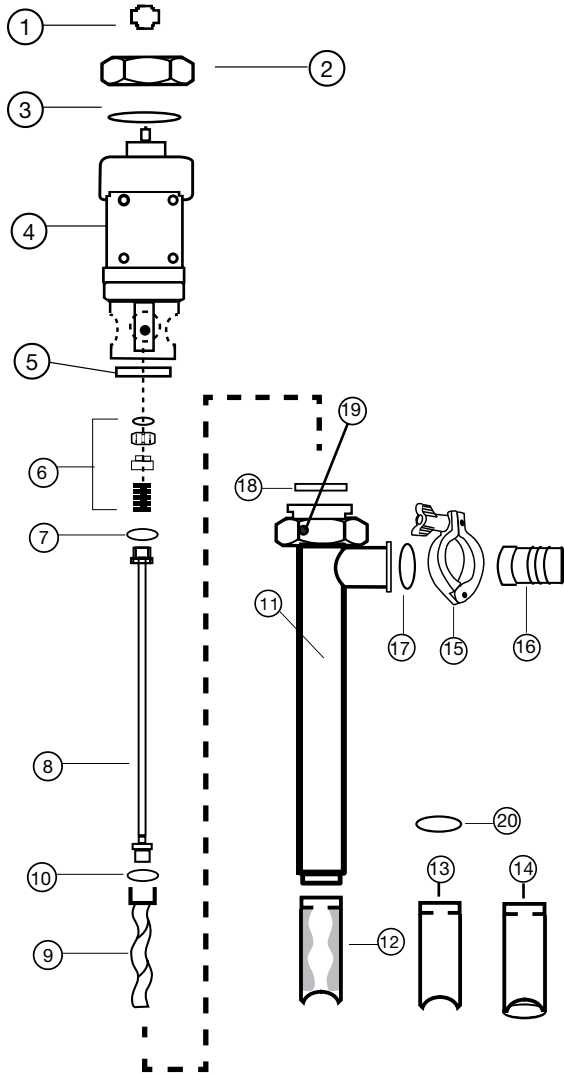


SP-800SR SERIES SPARE PARTS



| ITEM NUMBER | DESCRIPTION | PART NUMBER |
|-------------|---|-------------|
| 1 | Pump Coupling | 1004 |
| 2 | Hex Nut | 8842 |
| 3 | Snap Ring | 1508 |
| 4 | Gear Reduction Unit | 701 |
| 5 | Mechanical Seal Bushing | 702 |
| 6 | Mechanical Seal, SIC | 703 |
| 7 | Gasket PTFE | 735 |
| 8 | Drive Shaft, SS316 | |
| | Pump Sizes - SP-751-27,SP-752-27,SP-1851-27 | 704 |
| | Pump Sizes - SP-1851-39 | 705 |
| | Pump Sizes - SP-751-39,SP-752-39,SP-1851-47 | 706 |
| | Pump Sizes - SP-751-47,SP-752-47 | 707 |
| 9 | Rotor | |
| | Size 751 | 708 |
| | Size 752 | 709 |
| | Size 1851 | 710 |
| 10 | Gasket PTFE | 731 |
| 11 | Outer Tube Assembly | |
| | Pump Sizes - SP-751-27, SP-752-27, SP-1851-27 | 800 |
| | Pump Sizes - SP-1851-39 | 801 |
| | Pump Sizes - SP-751-39, SP-752-39, SP-1851-47 | 802 |
| | Pump Sizes - SP-751-47, SP-752-47 | 803 |
| 12 | Stator - BUNA*, FOOD GRADE | |
| | Size 751 | 816 |
| | Size 752 | 817 |
| | Size 1851 | 818 |
| | Stator - PTFE (stator insert only) | |
| | Size 751 | 822 |
| | Size 752 | 823 |
| | Size 1851 | 824 |
| 13 | Stator Tube** | |
| | Size 751 | 874 |
| | Size 752 | 875 |
| | Size 1851 | 876 |
| 14 | Stator Tube For Bag Liners | |
| | BUNA* | |
| | Size 751 | 816BL |
| | Size 752 | 817BL |
| | Size 1851 | 818BL |
| | PTFE** | |
| | Size 751 | 874BL |
| | Size 752 | 875BL |
| | Size 1851 | 876BL |
| 15 | Tri-Clamp | 833 |
| 16 | Hose Barb | |
| | 1.25 (32 mm) | 834 |
| | 1.5 (38 mm) | 835 |
| 17 | O-Ring - BUNA | 836 |
| 18 | Gasket - BUNA | 737 |
| | PTFE | 738 |
| 19 | Set Screw | 757 |
| 20 | SS Ring | 0016 |

*Includes Stator & Stator Tube. ** Does not include Stator #12 (TFE stator only).