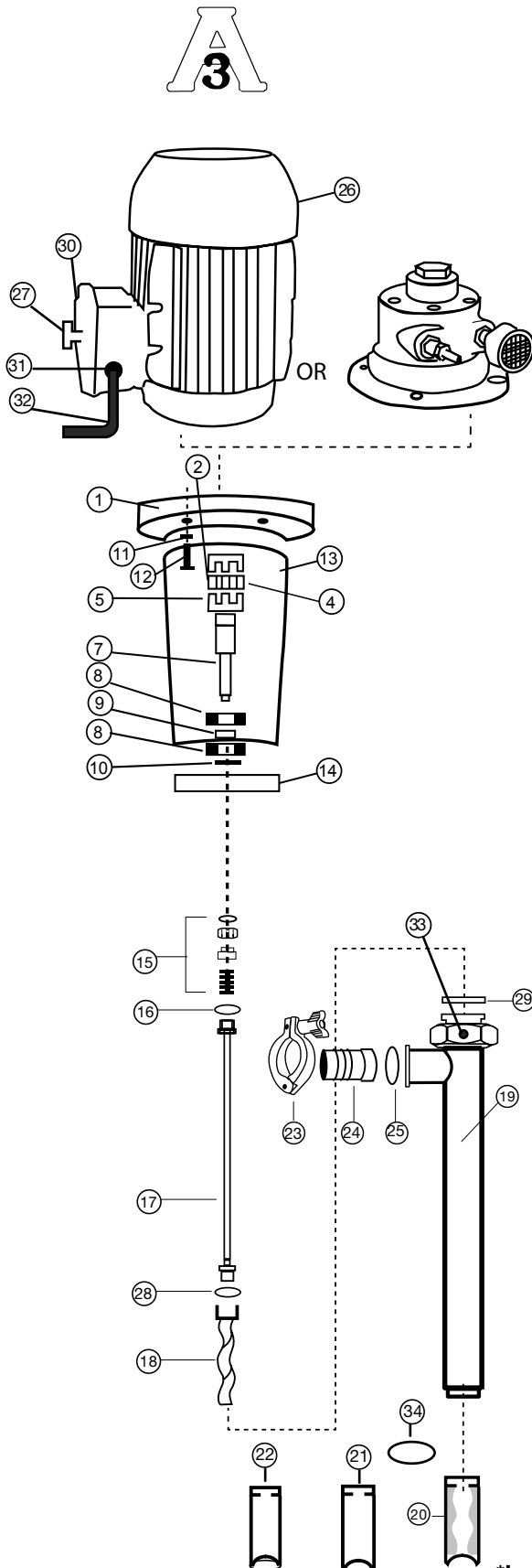


SP-800DD SERIES SPARE PARTS



ITEM #	DESCRIPTION	PART#
1	Flange Sizes SP-502, SP-504 & SP-508 models	761
	SP-512, SP-514 & SP-518 models (requires (2) flanges)	760
	SP-522, SP-524 & SP-528 models (requires (2) flanges)	760
	SP-A4FP model	760
	SP-A6FP & SP-A8FP models	762
2	Motor Coupling SP-502, SP-504, SP-508 & SP-A8FP models- 24mm	740
	SP-A4FP model - 14mm	744
	SP-A6FP model - 19mm	747
	SP-512, SP-514, SP-518, SP-522, SP-524, SP-528 models- 28mm	746
3	Coupling Key -- Not Shown SP-A4FP model- 5mm X 20mm	840
	SP-A6FP model- 6mm X 20mm	841
	SP-A8FP model- 8mm X 20mm	842
	SP-502, SP-504, SP-508, SP-512, SP-514, SP-518, SP-522, SP-524, SP-528 models- 8mm X 30mm	844
4	Coupling Insert	745
5	Pump Coupling- 24mm	740
6	Key- Pump Coupling-8 mm X 25 (not shown)	844
7	Bearing Shaft	750
8	Bearing	751
9	Bearing Spacer	752
10	Bearing Clip	753
11	Washer (4 required)	755
12	Bolt (4 required)	756
13	Bearing Housing, Aluminum	754
14	Mechanical Seal Bushing	702
15	Mechanical Seal, SIC	703
16	Gasket - PTFE	735
17	Drive Shaft Pump Sizes - SP-751-27, SP-752-27, SP-1851-27	704
	Pump Sizes - SP-1851-39	705
	Pump Sizes - SP-751-39, SP-752-39, SP-1851-47	706
	Pump Sizes - SP-751-47, SP-752-47	707
18	Rotor Size 751	708
	Size 752	709
	Size 1851	710
19	Outer Tube Assembly Pump Sizes - SP-751-27, SP-752-27, SP-1851-27	800
	Pump Sizes - SP-1851-39	801
	Pump Sizes - SP-751-39, SP-752-39, SP-1851-47	802
	Pump Sizes - SP-751-47, SP-752-47	803
20	Stator - BUNA*, FOOD GRADE Size 751	816
	Size 752	817
	Size 1851	818
	PTFE Size 751 (stator insert only)	822
	Size 752 (stator insert only)	823
	Size 1851 (stator insert only)	824
21	Stator Tube** Size 751	874
	Size 752	875
	Size 1851	876
22	Stator Tube For Bag Liners BUNA* Size 751	816BL
	Size 752	817BL
	Size 1851	818BL
	PTFE** Size 751	874BL
	Size 752	875BL
	Size 1851	876BL
23	Tri-Clamp	833
24	Hose Barb 1.25 (32 mm)	834
	1.50 (38 mm)	835
25	BUNA O-Ring (Sanitary)	836
26	Motor	
27	DD Series Motor Switch	570
28	Gasket - PTFE	731
29	Gasket - BUNA PTFE	737
		738
30	Switch Cover	571
31	Strain Relief	572
32	Power Cord 16 ft (5m)	8708
33	Set Screw	757
34	SS Ring	0016

*Includes Stator & Stator Tube.** Does not include Stator #20 (TFE stator only).