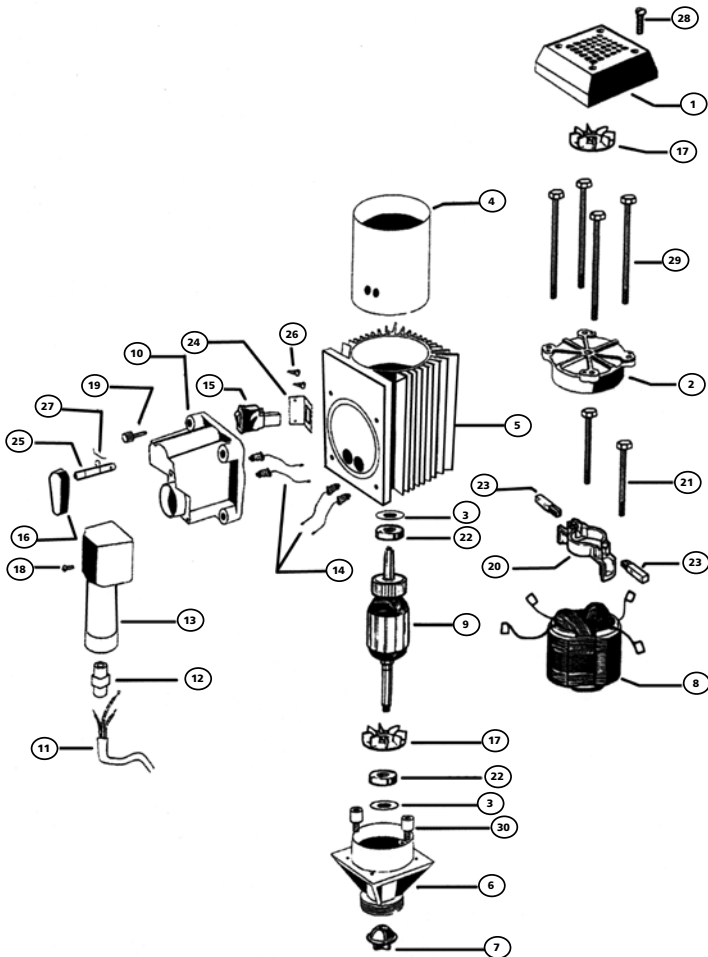


SP-400-2 SERIES EXPLOSION PROOF MOTOR SPARE PARTS



ITEM NUMBER	DESCRIPTION	PART NUMBER
1	Fan cover	5013
2	Bearing cover	5004
3	Wave washer (2 required)	5050
4	Glass sleeve	5137
5	Motor housing	5007
6	Lower housing	5006
7	Motor coupling	8333
8	Stator 220-240V	5002
9	Armature 220-240V	5001
10	Switch housing	5008
11	Cord without plug	8705-EXP
12	Strain relief	5046-1
13	Handle	5005
14	Pass through (4 required)	5036
15	Switch	8704LVR
16	On / Off knob	5017
17	Fan	5020
18	Switch handle screw (4 required)	5045
19	Switch housing screw (4 required)	5044
20	Brush holder	8508
21	Rod connector (2 required)	5015-04
22	Ball bearing (2 required)	5053
23	Carbon brush 220V (2 required)	8703
24	Switch bracket	5011
25	Switch actuator	5009
26	Switch bracket screw (2 required)	5015-01
27	Switch actuator pin	5016
28	Fan cover screw (4 required)	5015-02
29	Motor bolt (4 required)	5018-01
30	Insulator Screw (2 required)	5138

! When pumping flammables or combustible liquids, this pump must be used in conjunction with an explosion proof motor.