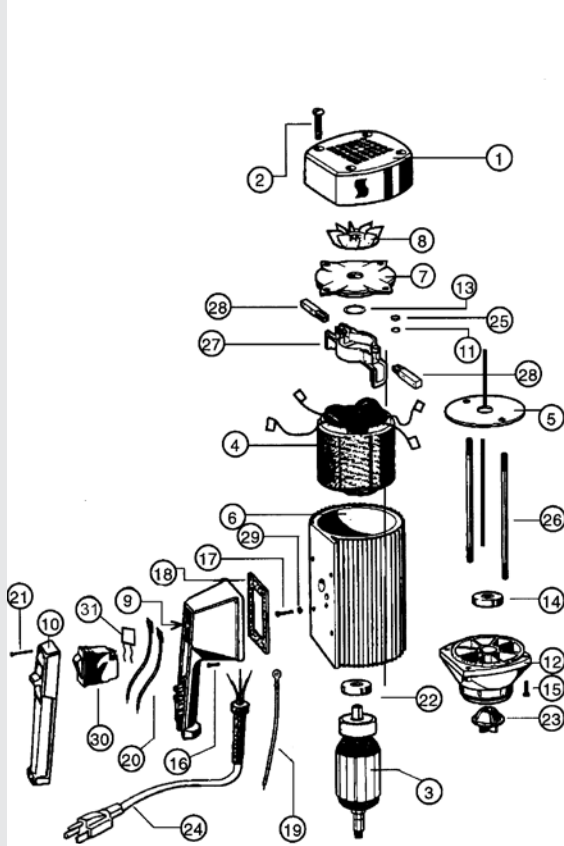


8320, 8320BL, 8321, & 8321BL SPARE PARTS

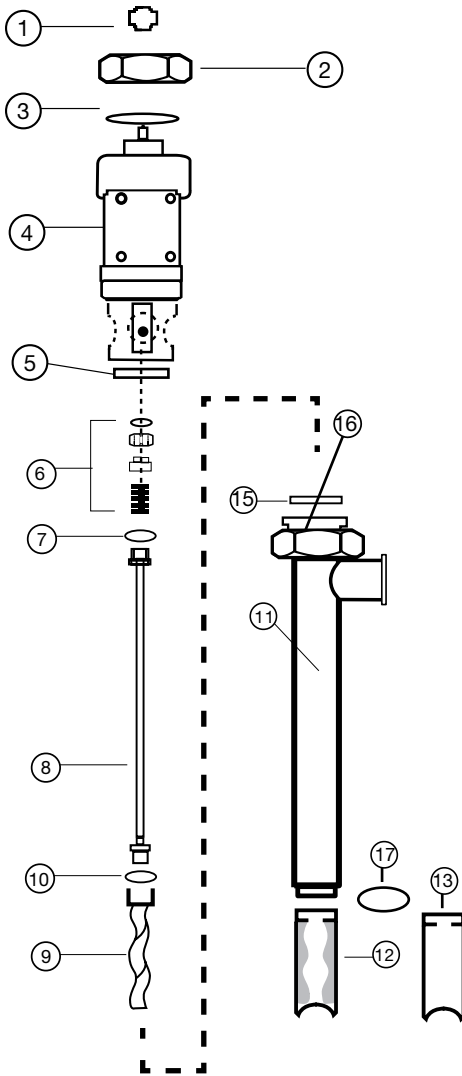
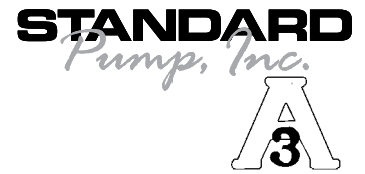


ITEM NUMBER	DESCRIPTION	PART NUMBER
1	Motor cover	3000
2	Screw	3130
3	Armature	110-120V 3502 220-240V 3701
4	Stator	110-120V 3503 220-240V 3702
5	Guide disc	3504
6	Motor housing	3510
7	Bearing cover	3511
8	Fan	3512
9*	Switch housing for variable speed, includes potentiometer	110-120V 8004 220-240V 8005
10*	Switch cover	8002
11*	Lock washer	8071
12*	Lower housing	8100
13*	Wave washer	8125
14*	Ball bearing	8126
15	Screw	8130
16A*	Screw for 110-120V	8131
16B*	Screw for 220-240V	36131LVR
17*	Ground screw	8162
18*	Gasket	8167
	Low voltage release (for 220-240V)	8167LVR
19	Earthing Lead	8183
20	Lead	8185
21*	Screw	8220
22	Ball bearing	8331
23*	Motor coupling	8333
24*	Power cord w/strain relief & plug	110-120V 8360 220-240V 8705
25*	Hexagon nut	8448
26	Rod connector	3703
27*	Brush holder	8508
28*	Carbon brush	110-120V 8509 220-240V 8703
29*	Star washer	8511
30*	Overload switch, 8.5 amp 110-120V 5 amp 220-240V low voltage release	8611 8704LVR
31	EMI Filter	8003

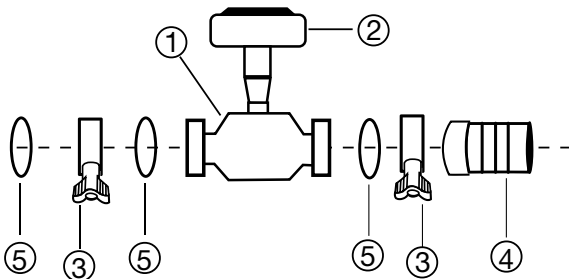
*Parts interchange with all Standard electric motors

! SP-ENC open motor should not be used to pump flammables.

8320, 8320BL, 8321, & 8321BL SPARE PARTS



ITEM NUMBER	DESCRIPTION	PART NUMBER
1	Pump Coupling	1004
2	Hex Nut	8842
3	Snap Ring	1508
4	Gear Reduction Unit	701
5	Mechanical Seal Bushing	702
6	Mechanical Seal, SIC	703
7	Gasket PTFE	735
8	Drive Shaft, SS316	
9	Rotor	Pump Size - SP-1851-39 705
10	Gasket PTFE	Size 1851 710
11	Outer Tube Assembly	Pump Size - SP-1851-39 801
12	Stator - PTFE	Size 1851 824
13	Stator Tube	Size 1851 876
14	Stator Tube For Bag Liner	Size 1851 876BL
15	Gasket PTFE	738
16	Set Screw	757
17	SS Ring	0016



ITEM NUMBER	DESCRIPTION	PART NUMBER
1	Turbine Meter	HM150FF00
2	Control Module	HRTI000
3	Tri-Clamp	833
4	Hose Barb	
	1.5 (38 mm)	835
5	O-Ring - BUNA	836